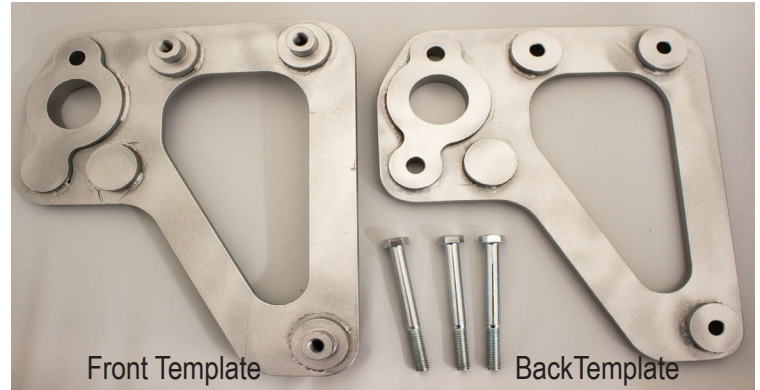


LKM10K Retrofit Fixture Instructions

Tools Needed

- 1/2" socket & wrench
- 1-1/4" hole saw
- 3/8" drill bit



Step 1 – Remove the existing LKM7000 Lock Series

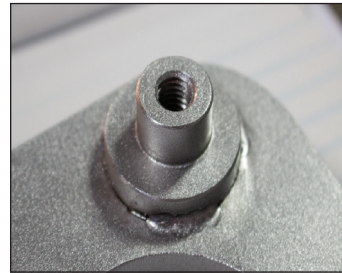


1 - LKM7003 Installed



1 - Removing LKM7003

Step 2 – Starting on the Exterior Trim side of the door align the Front Template bosses into the pre-drilled Exterior Trim attaching holes.



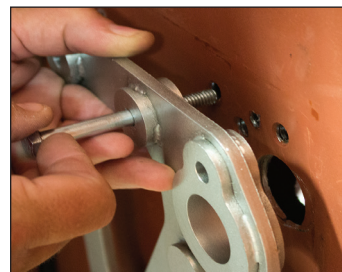
Front Template Bosses

Step 3 – Move to the Inside Base Plate side of the door and carefully push any wires back into the door, however, not too far.



2 - Attach Front Template

Step 4 - Place the Back Template flush against the door and thread the provided (3) bolts through the Back Template into the Front Template and tighten with 1/2" socket. This will secure the fixture to the door.



4 - Attach Back Template with provided (3) Bolts

Tip – Alternate tightening the bolts and be careful not to over tighten or the door may compress.



4 - Secure with 1/2" Socket Wrench

Step 5 - Starting on either side of the door attach a 1-1/4" hole saw and begin drilling the new hole for the Rim Cylinder. Drill only through the side of the door – NO THROUGH HOLES.



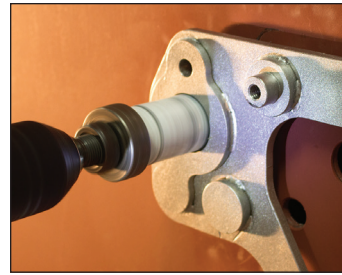
Back Template Attached



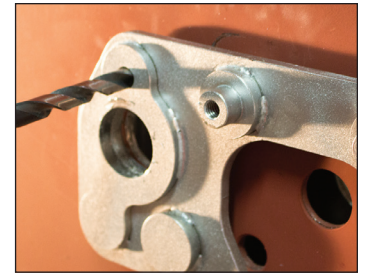
5 - Drilling Back Template Rim Cylinder Hole

Step 6 – Repeat on the other side.

Step 7 – On the Exterior Trim side of the door attach a 3/8" drill bit to drill the optional Light Pipe hole. Drill through the side only – NO THROUGH HOLES.



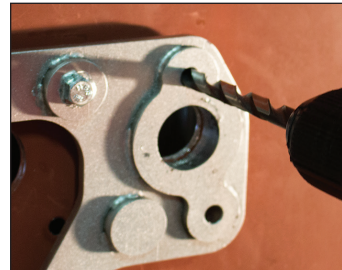
6 - Drilling Front Template Rim Cylinder



7 - Exterior Trim Side Drill Light Pipe hole

Step 8 – Repeat on the Base Plate side of the door.

Step 9 – Remain on the Base Plate side of the door and with the 3/8" drill bit drill the Wire Entry hole.



8 - Base Plate Side Drill Light Pipe Hole

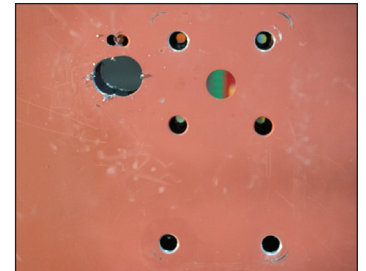


9 - Base Plate Side Drill Wire Entry Hole

Step 10 – Remove the Fixture with a 1/2" socket.



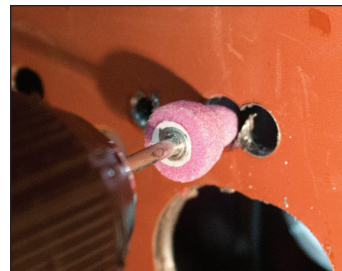
10 - Remove Fixture with 1/2" socket wrench



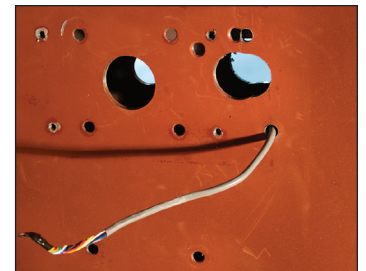
Fixture Removed

Step 11 – Deburr newly drilled holes on both sides of the door.

Step 12 – Pull wire through the Wire Entry hole



11 - Deburr newly drilled holes

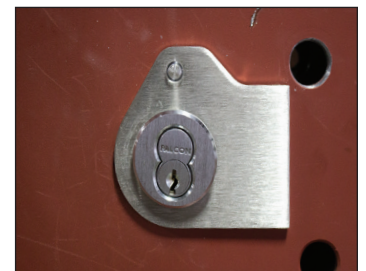


12 - Pull Wire through Entry Hole

Step 13 – Follow instructions provided with the LKM10K Lock Series to complete the retrofit process.



Light Pipe in new hole



Rim Cylinder Escutcheon Plate Installed in new hole